

Product Brochure

Optical Transceiver AOC & DAC



QSFP-DD/QSFP56 Series

Data Rates: 400G/200G Ethernet and Infiniband HDR/NDR
 Portfolio: SR8/SR4, DR4, FR8/PSM8, FR4/PSM4, LR4, ER4, etc.
 Environment: Commercial(0~70°C)



400G QSFP-DD				
Features	LA-OT-400GM8-01	LA-OT-400GD3P-05	LA-OT-400G3-10	LA-OT-400G3-40
Form Factor	QSFP-DD	QSFP-DD	QSFP-DD	QSFP-DD
Media	MMF	SMF	SMF	SMF
Number of Fibers	2 (Rx, Tx)	2 (Rx, Tx)	2 (Rx, Tx)	2 (Rx, Tx)
Data Rate	400G	400G	400G	400G
DDM	■	■	■	■
Rx Wavelength	850nm	1310nm	LWDM	LWDM
Tx Wavelength	850nm	1310nm	LWDM	LWDM
Max. Range	100m	500m	10km	40km
Connector	MPO-16/24	MPO-12	LC	LC

400G/200G DAC

- ▶ 400G PAM4 QSFP-DD to QSFP-DD
- ▶ 400G PAM4 QSFP-DD to 2*200G QSFP56
- ▶ 400G PAM4 QSFP-DD to 4* 100G QSFP56
- ▶ 400G PAM4 QSFP-DD to 8*50G QSFP56
- ▶ 200G PAM4 QSFP56 to 200G QSFP56 PAM4
- ▶ 200G PAM4 QSFP56 to 2*100G QSFP56 PAM4
- ▶ 200G PAM4 QSFP56 to 4*50G SFP56 PAM4

400G/200G AOC

- ▶ 400G QSFP-DD to QSFP-DD
- ▶ 200G QSFP56 to QSFP56
- ▶ 200G QSFP56 to 2*100G QSFP56

200G QSFP56				
Features	LA-OT-200GM8-01	LA-OT-200GD3P-2	LA-OT-200G3-10	LA-OT-200G3-40
Form Factor	QSFP56	QSFP56	QSFP56	QSFP56
Media	MMF	MMF	SMF	SMF
Number of Fibers	2 (Rx, Tx)	2 (Rx, Tx)	2 (Rx, Tx)	2 (Rx, Tx)
Data Rate	200G	200G	200G	200G
DDM	■	■	■	■
Rx Wavelength	850nm	CWDM	LWDM	LWDM
Tx Wavelength	850nm	CWDM	LWDM	LWDM
Max. Range	100m	2km	10km	40km
Connector	MPO-12	LC	LC	LC

QSFP Series

Data Rates: 100G/40G Ethernet and telecom connections

Portfolio: SR4, PSM4, LR4, ER4, etc.

Environment: Commercial(0~70°C), Industrial(-40~85°C)



100G QSFP28						
Features	LA-OT-100GM8-01	LA-OT-100GD3-05	LA-OT-100G3-10	LA-OT-100G3P4-10	LA-OT-100GD3-40	LA-OT-100GD3-80
Form Factor	QSFP28	QSFP28	QSFP28	QSFP28	QSFP28	QSFP28
Media	MMF	SMF	SMF	SMF	SMF	SMF
Number of Fibers	2 (Rx, Tx)	2 (Rx, Tx)	2 (Rx, Tx)	2 (Rx, Tx)	2 (Rx, Tx)	2 (Rx, Tx)
Data Rate	100G	100G	100G	100G	100G	100G
DDM	■	■	■	■	■	■
Rx Wavelength	850nm	CDWM	CDWM	1310nm	CDWM	CDWM
Tx Wavelength	850nm	CDWM	CDWM	1310nm	CDWM	CDWM
Max. Range	100m	500m	10km	10km	40km	80km
Connector	MPO-12	LC	LC	MPO-12	LC	LC

100G/40G DAC&AOC

- ▶ 100G QSFP28 to QSFP28
- ▶ 100G QSFP28 to 4*25G SFP28
- ▶ 40G QSFP+ to QSFP+
- ▶ 40G QSFP+ to 4*10G SFP+



40G QSFP+					
Features	LA-OT-40G-SR4-M	LA-OT-40G-SR4-L	LA-OT-40GD3-10	LA-OT-40GD3-40	LA-OT-40GD3-80
Form Factor	QSFP+	QSFP+	QSFP+	QSFP+	QSFP+
Media	MMF	MMF	SMF	SMF	QSFP+
Number of Fibers	2 (Rx, Tx)	2 (Rx, Tx)	2 (Rx, Tx)	2 (Rx, Tx)	2 (Rx, Tx)
Data Rate	40G	40G	40G	40G	40G
DDM	■	■	■	■	■
Rx Wavelength	850nm	850nm	CWDM	CWDM	CWDM
Tx Wavelength	850nm	850nm	CWDM	CWDM	CWDM
Max. Range	150m	150m	10km	40km	80km
Connector	MPO-12	LC	LC	LC	LC

SFP Series

Data Rates: 10/100/1000M, 1.25Gb/s Ethernet

Portfolio: 1G SX, LX, EX, ZX, EZX, BIDI, etc.

Environment: Commercial(0~70°C), Industrial(-40~85°C)



GIGABIT SFP						
Features	LA-OT-GMM8-05	LA-OT-GMM3-2	LA-OT-G3-10	LA-OT-G3-40	LA-OT-G5-80	LA-OT-G5-120
Form Factor	SFP	SFP	SFP	SFP	SFP	SFP
Media	MMF	MMF	SMF	SMF	SMF	SMF
Number of Fibers	2 (Rx, Tx)	2 (Rx, Tx)	2 (Rx, Tx)	2 (Rx, Tx)	2 (Rx, Tx)	2 (Rx, Tx)
Data Rate	1.25G	1.25G	1.25G	1.25G	1.25G	1.25G
DDM	■	■	■	■	■	■
Rx Wavelength	850nm	1310nm	1310nm	1310nm	1550nm	1550nm
Tx Wavelength	850nm	1310nm	1310nm	1310nm	1550nm	1550nm
Max. Range	550m	2km	10km	40km	80km	120km
Connector	LC	LC	LC	LC	LC	LC

GIGABIT SFP BIDI					GIGABIT FIBER (CSFP)	
Features	LA-OT-GBD35-10 LA-OT-GBD53-10	LA-OT-GBD35-40 LA-OT-GBD53-40	LA-OT-GBD54-80 LA-OT-GBD45-80	LA-OT-GBD54-120 LA-OT-GBD45-120	LA-OT-CSFP-20	LA-OT-CSFP-40
Form Factor	SFP	SFP	SFP	SFP	CSFP	CSFP
Media	SMF	SMF	SMF	SMF	SMF	SMF
Number of Fibers	1 (BiDi)	1 (BiDi)	1 (BiDi)	1 (BiDi)	2 (BiDi)	2 (BiDi)
Data Rate	1.25G	1.25G	1.25G	1.25G	1.25G	1.25G
DDM	■	■	■	■	■	■
Rx Wavelength	1310nm 1550nm	1310nm 1550nm	1550nm 1490nm	1550nm 1490nm	1310nm	1310nm
Tx Wavelength	1550nm 1310nm	1550nm 1310nm	1490nm 1550nm	1490nm 1550nm	1490nm	1490nm
Max. Range	10km	40km	80km	120km	20km	40km
Connector	LC/SC-BIDI	LC/SC-BIDI	LC-BIDI	LC-BIDI	2×LC	2×LC

Copper Series

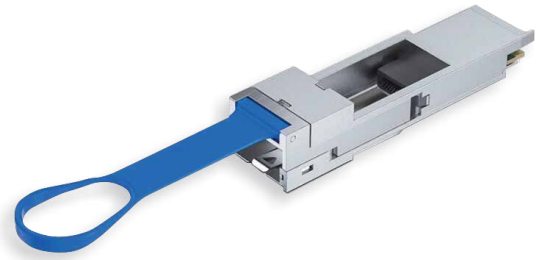
Copper Small Form Pluggable transceivers are high performance, cost effective module compliant with the 1G/10G Ethernet and 1G/10GBASE-T standards as specified in IEEE802.3az.



COPPER RJ45				
Features	LA-OT-GT-RJ45	LA-OT-GTA-RJ45	LA-OT-10GT-RJ-2	LA-OT-10GT-RJ-3
Form Factor	SFP	SFP	SFP+	SFP+
Data Rate	100M	10/100/1000M	1G / 10GBase-T	100M / 1G / 2.5G / 5G / 10G
Max. Range	100m	100m	30m	80m
Connector	RJ45	RJ45	RJ45	RJ45
Temperature	0°C~70°C	0°C~70°C	-5°C~85°C	-5°C~85°C

Converter Module Series

Data Rates: 10G/25G SFP+ optics and cable reaches,
 Portfolio: 10G/25G SR, LR, ER, ZR, etc.
 Environment: Commercial(0~70°C), Industrial(-40~85°C)



	40G QSFP+ to 10G SFP+	100G QSFP28 to 25G SFP28
Features	LA-OT-QSFP-SFP	LA-OT-QSFP28-SFP28
Form Factor	QSFP+	QSFP28
Data Rate	10G	25G
DDM	■	■

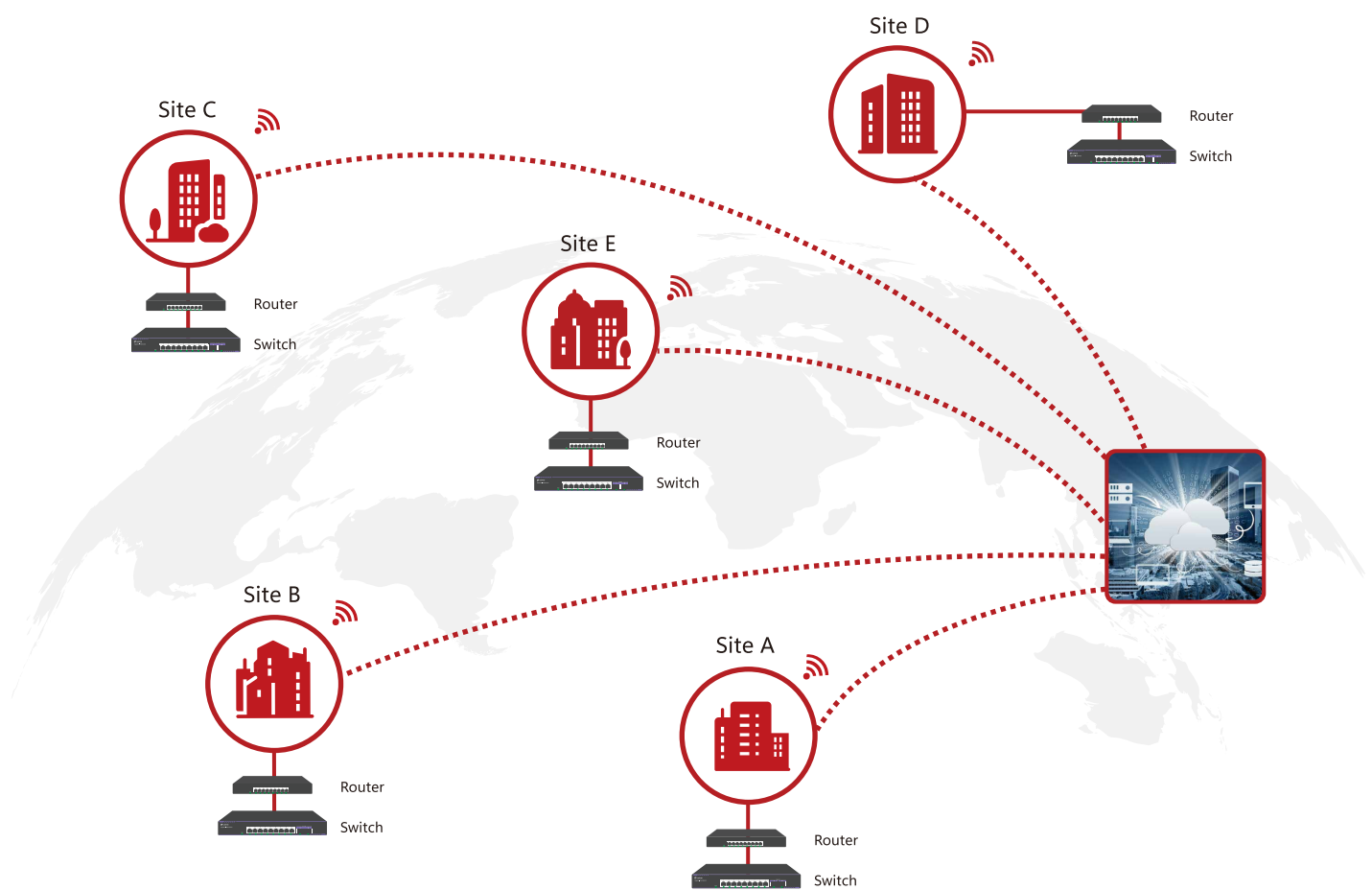
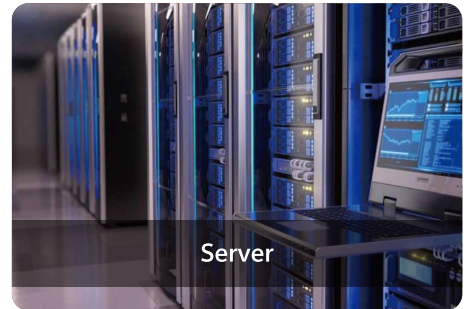
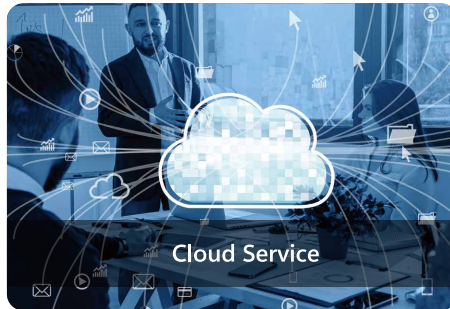
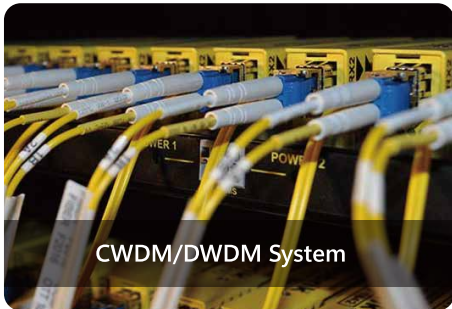
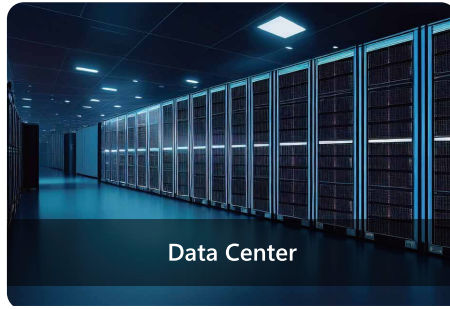
PON SFP Series

Passive Optical Network (PON) is essential point-to-multipoint technologies used for deploying fiber-based access FTTx networks, business service, or wireless backhaul applications. Which makes it a great solution for service providers to build passive connectivity between the network backbone and end-users.



	GPON OLT			XGS-PON OLT			
Features	LA-OT-GP-B	LA-OT-GP-C	LA-OT-GP-C2	LA-OT-XGP-E1	LA-OT-XGP-E2	LA-OT-XGP-N1	LA-OT-XGP-N2
Form Factor	SFP	SFP	SFP	SFP+	SFP+	SFP+	SFP+
Type	Class B+	Class C+	Class C++	Class E1	Class E2	Class N1-E	Class N2-E
Max. Range	20km	20km	20km	20km	20km	20km	20km
Max. Power	0.9W	0.9W	0.9W	2W	2W	2W	2W

Application



Certificate



ISO 9001 2015



DAC AOC - EMC



Transceiver - EMC



Transceiver - RoHS



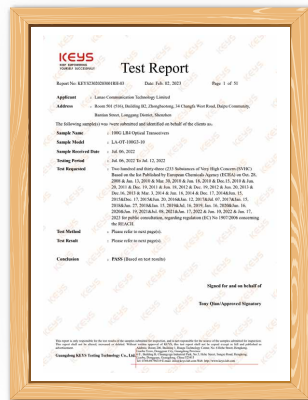
DAC AOC - RoHS



DAC AOC - FCC



Transceiver - FCC



Transceiver - Reach233



DAC AOC - Reach233



Lanau Communication Technology Limited

Addr: 4th Floor, #A5, Dafu Industrial Park, No.22 Dafu Road, Longhua, Shenzhen, 518110, P.R.C
 Sales Office: #B2, Zhongbaotong Creative Park, No.34 Changfa West Road Bantian, Shenzhen, 518029, P.R.C

+86-755-84656994

info@lanaotek.com

www.lanaotek.com